

TalDrip™ New



Thin and medium-walled dripline

Innovative multi-purpose dripline with the most advanced labyrinth dripper on the market: maximum durability, accuracy and clog resistance

Thin-walled dripline for seasonal use or medium-walled dripline for multi-season use.

Applications

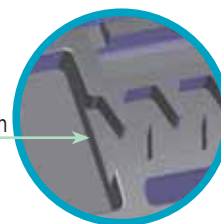
- Ideal for sugarcane and biofuel crops, vegetables, flowers and other row crops requiring low discharge and close dripper spacing
- Germination and seedling establishment
- SDI (sub-surface drip irrigation) and surface installation

Structure and features

- Incorporates the Cascade labyrinth
- Sets new standards of clog resistance for thin-walled driplines:
 - Double flow regime for highly effective self-cleaning
 - 3D water inlet triples handling of dirt load
 - Grooved surface design ensures reliable performance, even when inlet surface area is covered with clogging materials
- Special design to minimize root intrusion and sand suction
- Closer dripper spacing (from 10 cm) for successful germination and improved irrigation management
- Very low CV ensures accurate performance
- Advanced quality-control technology for reliable performance
- Longer lateral and higher accuracy with excellent dripper exponent of 0.45

Technical data

Nominal diameter (mm)	Wall th. (mm)	Wall th. (mil)	OD (mm)	ID (mm)	Max. pressure (bar)
16	0.90	35	15.70	13.9	3.0
	0.20	8	16.20	15.8	0.9
17	0.25	10	16.30	15.8	1.0
	0.33	13	16.46	15.8	1.4
	0.38	15	16.56	15.8	1.8
	0.45	18	16.70	15.8	2.0
	0.63	25	16.86	15.6	2.5
	0.85	35	17.10	15.4	3.0
20	0.95	37	19.90	18.0	3.0
22	0.63	25	22.06	20.8	2.0
	0.90	35	22.60	20.8	3.0
23	0.20	8	22.60	22.2	0.7
	0.25	10	22.70	22.2	0.8
	0.33	13	22.86	22.2	1.2
	0.38	15	22.96	22.2	1.4
	0.45	18	23.10	22.2	1.7



Sand and roots protection

1.0 l/h



1.7 l/h



4.0 l/h



Back view



Three-dimensional water inlet filter

Technical Data

Flow rate: 1.0, 1.7, 4.0 l/h

Operating pressure: 0.5-3.0 bar, according to wall thickness

Dripline diameter: 17-27* mm

Wall thickness: 8-37 mil (0.20-0.95mm)

Dripper spacing: as from 10 cm

Filtration recommendation: 120 mesh, 130 micron

* For technical data on 27mm dripline diameter, please contact your local representative.



TalDrip™

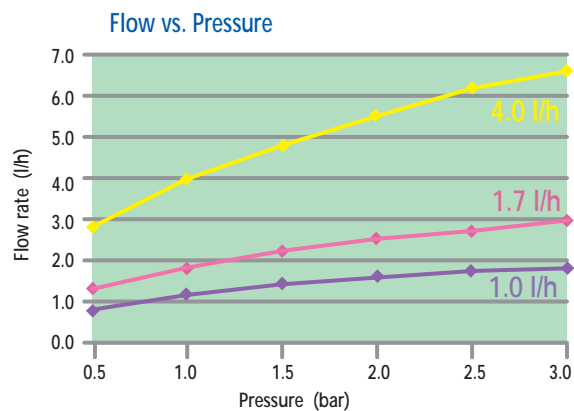
Thin and medium-walled dripline



Maximal lateral length (m) at 10% flow variations*

Nominal diameter (mm)	Wall th. (mil)	Dripper spacing (cm)					
		1.0 (l/h)					
16		84	114	142	168	191	213
17	8-18	97	132	163	192	219	244
	25	96	130	160	189	215	239
	35	94	128	158	186	211	235
20		115	160	200	238	272	305
22		149	203	252	298	340	380
23		158	219	273	324	370	415
	Wall th. (mil)	1.7 (l/h)					
		20	30	40	50	60	70
16		61	83	103	121	138	154
17	8-18	70	95	117	138	157	174
	25	69	93	115	135	154	171
	35	68	92	113	133	151	168
20		85	117	146	172	197	220
22		108	148	182	215	245	273
23		116	159	198	234	268	299
	Wall th. (mil)	4.0 (l/h)					
		20	30	40	50	60	70
16		36	49	60	71	80	90
17	8-18	44	60	74	87	98	109
	25	42	57	70	82	93	104
	35	40	53	65	77	87	97
20		51	69	86	101	115	129
22		64	87	107	125	142	158
23		75	102	126	149	170	189

*on flat ground



Flow rate vs. pressure

P (bar)	Q (l/h)								
	1.0			1.7			4.0		
	8-18mil	25mil	35mil	8-18mil	25mil	35mil	8-18mil	25mil	35mil
0.5	0.75	0.77	0.80	1.27	1.25	1.30	2.55	2.70	2.90
1.0	1.00	1.05	1.10	1.60	1.70	1.80	3.50	3.70	4.00
1.5	1.20	1.25	1.30	1.90	2.05	2.15	4.20	4.45	4.80
2.0	1.35	1.45	1.50	2.20	2.30	2.45	4.80	5.10	5.50
2.5	1.50	1.60	1.65	2.40	2.60	2.70	5.30	5.65	6.10
3.0	1.65	1.70	1.80	2.60	2.80	2.95	5.80	6.10	6.60
a	0.355	0.373	0.390	0.568	0.603	0.639	1.387	1.283	1.387
x	0.45	0.45	0.45	0.45	0.45	0.45	0.46	0.46	0.46

a = Dripper flow constant

x = Dripper flow exponent



NAANDANJAIN
IRRIGATION

NaanDanJain Irrigation (C.S.) Ltd.
Head Office: Post Naan 76829, Israel Tel: 972-8-9442180
Fax: 972-8-9442190 E-mail: mkt@naandanjain.com
www.naandanjain.com

© 2010 NaanDanJain Ltd. All rights reserved.
All specifications are subject to change without notice.