

JardiLine 16™

JardiLine 16™

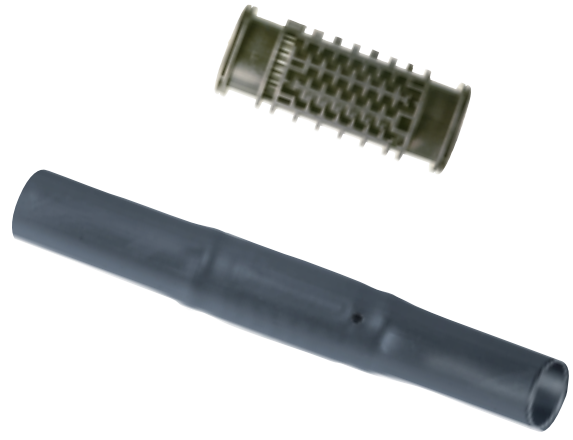
Primary applications: Lawns, shrubs, trees and flowerbeds; subsurface or surface installation

Main features

- Round dripper with innovative Cascade labyrinth
- High clogging resistance
- Durable tube for years of trouble-free use
- Brown UV-protected tube blends with ground or mulch colours

Technical data

Dripper flow rate: 2 l/h
 Recommended working pressure: 0.2 - 3.5 bar
 Recommended filtration: 120 mesh
 Coil length: 25, 50, 100, 400 m



Maximum lateral length (meters)

Dripline	Nominal flow l/h	Dripper spacing (cm)	
		30	50
JardiLine 2	2.0	57	85

Average dripper flow vs. pressure

l/h	bar						
	0.5	1.0	1.5	2.0	2.5	3.0	3.5
2.0	1.50	2.20	2.75	3.20	3.60	3.95	4.25

